

KD-Validated Anti-PPM1G Rabbit Monoclonal Antibody
Rabbit monoclonal antibody
Catalog # AGI1268**Specification****KD-Validated Anti-PPM1G Rabbit Monoclonal Antibody - Product Information**

Application	WB, FC, ICC
Primary Accession	O15355
Reactivity	Rat, Human, Mouse
Clonality	Monoclonal
Isotype	Rabbit IgG
Calculated MW	Predicted, 59 kDa , observed, 72 kDa KDa
Gene Name	PPM1G
Aliases	PPM1G; Protein Phosphatase, Mg ²⁺ /Mn ²⁺ Dependent 1G; PP2CG; Protein Phosphatase Magnesium-Dependent 1 Gamma; Protein Phosphatase 1G ; Protein Phosphatase 1C; EC 3.1.3.16; PP2C-Gamma; PP2CGAMMA; Protein Phosphatase 1G (Formerly 2C), Magnesium-Dependent, Gamma Isoform; Protein Phosphatase, Mg ²⁺ /Mn ²⁺ Dependent, 1G; Protein Phosphatase 2C, Gamma Isoform; Protein Phosphatase 2C Isoform Gamma; PP2C, Gamma; PP2Cgamma; PPP2CG; PPM1C
Immunogen	A synthesized peptide derived from human PPM1G

KD-Validated Anti-PPM1G Rabbit Monoclonal Antibody - Additional Information

Gene ID	5496
Other Names	Protein phosphatase 1G, 3.1.3.16, Protein phosphatase 1C, Protein phosphatase 2C isoform gamma, PP2C-gamma, Protein phosphatase magnesium-dependent 1 gamma, PPM1G, PPM1C

KD-Validated Anti-PPM1G Rabbit Monoclonal Antibody - Protein Information**Name** PPM1G**Synonyms** PPM1C**Cellular Location**

Cytoplasm. Membrane; Lipid-anchor

Tissue Location

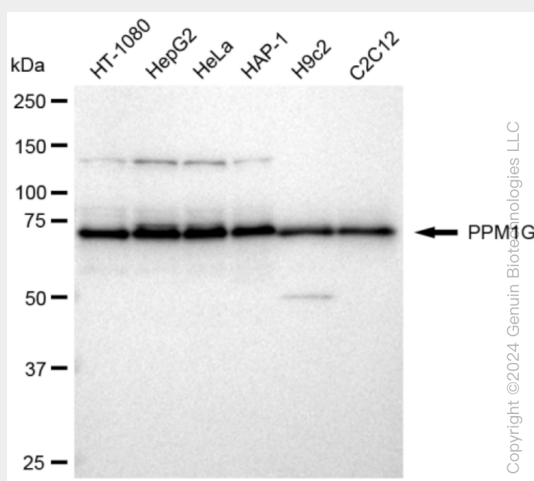
Widely expressed. Most abundant in testis, skeletal muscle, and heart

KD-Validated Anti-PPM1G Rabbit Monoclonal Antibody - Protocols

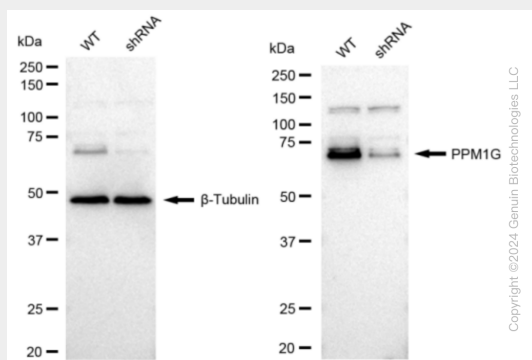
Provided below are standard protocols that you may find useful for product applications.

- [Western Blot](#)
- [Blocking Peptides](#)
- [Dot Blot](#)
- [Immunohistochemistry](#)
- [Immunofluorescence](#)
- [Immunoprecipitation](#)
- [Flow Cytometry](#)
- [Cell Culture](#)

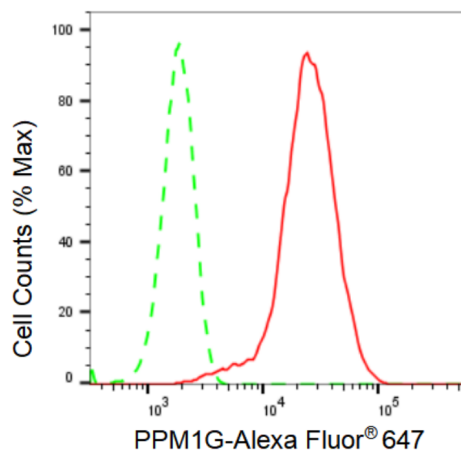
KD-Validated Anti-PPM1G Rabbit Monoclonal Antibody - Images



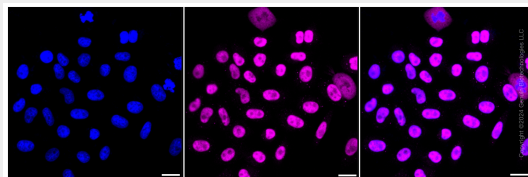
Western blotting analysis using anti-PPM1G antibody (Cat#AGI1268). Total cell lysates (30 µg) from various cell lines were loaded and separated by SDS-PAGE. The blot was incubated with anti-PPM1G antibody (Cat#AGI1268, 1:5,000) and HRP-conjugated goat anti-rabbit secondary antibody respectively.



Western blotting analysis using anti-PPM1G antibody (Cat#AGI1268). PPM1G expression in wild type (WT) and PPM1G shRNA knockdown (KD) HeLa cells with 30 µg of total cell lysates. β-Tubulin serves as a loading control. The blot was incubated with anti-PPM1G antibody (Cat#AGI1268, 1:5,000) and HRP-conjugated goat anti-rabbit secondary antibody respectively.



Flow cytometric analysis of PPM1G expression in HepG2 cells using PPM1G antibody (Cat#AGI1268, 1:2,000). Green, isotype control; red, PPM1G.



Immunocytochemical staining of HepG2 cells with PPM1G antibody (Cat#AGI1268, 1:1,000). Nuclei were stained blue with DAPI; PPM1G was stained magenta with Alexa Fluor® 647. Images were taken using Leica stellaris 5. Protein abundance based on laser Intensity and smart gain: Medium. Scale bar: 20 µm.